

In This Issue

Presidents Message.....	2
Meet Flint Palmer.....	3
Meet Patricia Narbaitz.....	3
Meet Lorraine Zirke.....	4
Meet Lesley Matheson.....	4
General Manager Message.....	5
Employee Message.....	5
Fantastic Phyllo Apple Strudel....	6
Its All About Trains.....	7
Our Membership.....	8
Volunteering.....	8
Unique Gifts.....	8
Membership Pricing.....	8

Upcoming Events: The Annual General Meeting

The annual general meeting of the Friend of Yoho is happening soon! This is an opportunity to come out and connect with Friends of Yoho friends, volunteers, and board members!

The annual general meeting is an opportunity for anyone in the public to mix and mingle with the board, meet new board members, and voice opinions on current or future projects and programs involving the Friends organization!

Please see below for details:

When: 6pm to 9pm, Saturday, June 1st, 2019

Where: Field Plaza, Field, BC

Who: Open to everyone!

What: This years meeting will begin at 6pm and will be followed by a wiener roast. Come on down and enjoy fun!

Presidents Message

by Helen Barry

Hello Friends of Yoho,

The snow is melting, the robins are singing, and the Friends of Yoho are coming out of semi-hibernation and making plans for the busy summer season.

It has been a productive hibernation though, as we have welcomed 3 new Board members, bringing us up to a grand complement of 6:

Lorraine Zirke introduces herself in this newsletter. Welcome Lorraine. It's good to have you "on Board."

Flint Palmer is a Fieldite with his fingers in many pots, including the Field Recreation Advisory Association, and his main activity lately, organizing the first annual Field Summer Music Festival which you can read about in these pages.

And Patricia Narbaitz (Tricia), who came from Calgary, as a guest, to our fall fundraiser. Although Tricia's full-time occupation as an accountant in Calgary will probably prevent her from ever sitting around the table for a Board meeting at our office in Field, she has graciously offered her services to be our Treasurer, working with our own accountant, and reporting back to the Board.

We are also pleased to have Lesley Matheson, as our new Parks Canada Liaison. Lesley, we appreciate, your proximity (in your office down the hall from ours) and look forward to working with you.

So, just to bring you, our valued members up to date on projects we are working on:

Spiral Train Model: We are unwrapping our Spiral Train Model, and getting it up and running thanks to Shane Mitchell, train geek who comes from Golden regularly to get us on the right track, and also, thanks to Barb and



Helen Barry, President of the Friends of Yoho!

her crew at the Visitors' Centre who have made daily train maintenance a part of their routine. Who knew when we started this project that it would require daily maintenance? If you haven't seen the train, it's worth a visit to the Visitors' Centre to check it out. And, by all means, if you have hankering to get underneath there and clean tiny wheels, and polish tiny tracks, we'd love your help.

Water Bottle Refill Station: We purchased and had delivered a water bottle refill station to be installed in the Visitors' Centre, but it turned out to be the wrong one, so we are back to the drawing board with that one. Hopefully, it will get installed for this tourist season because we want our visitors to appreciate our beautiful pure mountain water as we do, as well as, to stop using single use plastic bottles.

Summer Volunteering: We will again be welcoming the summer volunteers from GO International and will be partnering with Parks Canada and Skiing Louise to identify projects in Yoho where these international youth can help us out.

For summer programming:

Fran Fireside Chat: We are hoping to have Fran Drummond, owner/operator of Twin Falls Chalet in the Yoho Valley back by popular demand to tell more tales of her 50+ years in Yoho.

Historic Walking Tours: We will be conducting our Historic Walking Tours of Field on summer evenings. A note on this, we need some volunteers who are familiar with the village and park (or want to become more familiar). It requires 1 hour a week. If you feel you would like to get involved, please let us know.

Meet S'More Friends: And we will do an evening around the campfire in Kicking Horse Campground we call "Meet S'More Friends", hopefully with some local musical talent.

Check our website or Facebook page as we finalize dates for these events. And if you have a suggestion for another speaker or event, we are open.

As always, we want to thank you for your support of the Friends of Yoho, and encourage you to renew your membership, either using the form included in this newsletter or through our office or store.

Finally, A SPECIAL THANK YOU to Markus Selkirk, member and volunteer extraordinaire who put this newsletter together!

New Board Member: Flint Palmer

by Flint Palmer

Hello,

My name is Flint Palmer and I am very excited to join the FOY Board of Directors.

I have always been very active in the communities that I have resided in, as I feel it's an important

contribution, ranging from the board for Music NWT to a Junior B Hockey announcer. I am currently working on a 1-day music festival here in the village of Field with amazing support from the community and business in the area. I look forward to bringing my experience to the FOY board.



Flint Palmer, a new addition to the Board with his lovely partner

New Board Member: Patricia Narbaitz

by Patricia Narbaitz

I am so excited to join the Board of the Friends of Yoho as the Treasurer. I am an accountant by training, and after many years of school and exam writing I have been working at a large accounting firm in Calgary. But I assure you I am not your typical accountant! I try to spend as much time as I possibly can outdoors in our beautiful national parks. My great passions are skiing and hiking, but I can be convinced to do almost any physical activity as long as it can be enjoyed outside.



Tricia enjoying the world class views near Lake O'Hara

I first came to know Yoho in a visit to Lake O'Hara on a cold fall day in 2017, when the larch trees were turning bright yellow and shining in the sun.

Since my first visit to Yoho, I have done a handful of other hikes in the area and spent some time skiing at Emerald Lake and enjoying visiting friends in the Village of Field. I visit often and hopefully will have a chance to meet many of the members of the Friends of Yoho at the many events in town.

I am very excited to be on the Board for the Friends of Yoho. Caring for our national parks is very important to me and combining that with my accounting knowledge seems like the perfect way for me to get involved!

New Board Member: Lorraine Zirke

by Lorraine Zirke

I am excited to be one of the newest board members of Friends of Yoho. I have resided in the community of Field since 1988. As a resident of Field I bring a passion and understanding of life in Yoho. I feel very confident in saying I know the area very well.



Lorraine Zirke, a new addition to the Friends of Yoho Board!

My work life here has given me lots of experience in tourism and organization. This experience can be utilized in new input for present projects and suggestions for new. I have lots of energy and love working in a team setting!

Meet our Liaison: Lesley Matheson

By Lesley Matheson

I am a Partnering and Engagement Officer for the Lake Louise, Yoho and Kootenay Field Unit. I work out of the Field School building and will be taking on the role of Parks Canada liaison for the Friends of Yoho. I live in Golden, and enjoy splitting my time between enjoying Yoho, Kootenay and the bike trails in Golden during the summer, and of course the skiing in the winter. I am excited to take on this new role and share my passion for Yoho National Park with the Friends of Yoho!



Leslie enjoying the snowy views and getting some fresh mountain air!



Brenda Selkirk, the General Manager of the Friends of Yoho (and also a snow man in the background!)

General Manager Message

by Brenda Selkirk

Hi my name is Brenda Selkirk. I am gearing up for another busy tourist season in the gift shop. This season we have Talia Galligan returning to work full time. Talia had been with The Friends of Yoho for two previous years and I am happy to have her back. The gift shop will be open May 1st regular hours (9-5). The gift shop is well stocked with all kinds of unique items. These include jewelry, books, maps, with baby, kids, youth and adult clothing. There is an assortment of chocolate bars for the chocolate lovers out there made locally in Canmore, Alberta.

Employee Message

by Talia Galligan

Hi my name is Talia. I grew up in Field and the Friends of Yoho store has been here as long as I can remember. I am happy to be returning for another season. I look forward to the variety during the workday. You meet people from all around the world every day and it is very interesting!



Talia Galligan, a seasoned employee in the Friends of Yoho store!

Fantastic Phyllo Apple Strudel

by Ginette Therrien

Due to the popularity of this tasty treat at the Silent Auction last fall, Ginette Therrien has agreed to share the recipe with the Friends of Yoho!



Ginette Therrien, the proud author of this recipe!

Ingredients

- 5 apples, peeled, cored, thinly sliced (2 Granny Smith and 3 Gala apples, or your choice)
- 1/4 cup brown sugar
- 1 1/2 tsp ground cinnamon
- 1/4 tsp nutmeg
- 1/4 tsp ground cardamom
- 1/2 cup chopped walnut (optional)
- 1/3 cup raisins
- 5 thawed phyllo dough sheets

Instructions

1. Preheat oven to 375 degrees F.
2. In a large bowl, mix all ingredients.

3. Prepare a large baking sheet lined with parchment paper. Prepare a mixture of 2 tbsp of melted butter and 1/4 cup of olive oil (use this mixture to brush the phyllo sheets, more if needed).
4. Take 1 phyllo sheet and lay it in the prepared baking sheet. Brush with the butter/oil mixture you prepared. Place another phyllo sheet on top and repeat the process to 5 sheets. Work quickly to keep the phyllo from drying.
5. Spoon apple filling lengthwise on phyllo, leaving space at top and edges. Fold edges of phyllo over apple mixture. Brush end with butter/ olive oil mixture. Fold phyllo over apple filling and roll towards the other end (Do not roll phyllo too tightly). Keep the seam on the bottom.
6. Brush strudel with butter /olive oil mixture. Bake in 375 degrees F for 35 minutes or until phyllo turns a nice golden brown.
7. Remove from oven and let cool in sheet pan. To garnish, sprinkle apple strudel with confectioner's sugar. Slice and serve.

Tips for Phyllo Apple Strudel

- 1) Be sure the phyllo dough is properly thawed in the fridge overnight. Take out of the fridge about 30 minutes to 1 hour before use.
- 2) When assembling the phyllo dough, work right in the sheet pan that you will use to bake the strudel, that way you don't have to risk breaking the strudel when transferring.
- 3) Work fast so that the phyllo does not dry out and begin to break. You will work with one phyllo sheet at a time, if you need to, cover the rest of the sheets with a damp kitchen towel as you work.

Its All About the Trains

by Sarah Osadetz

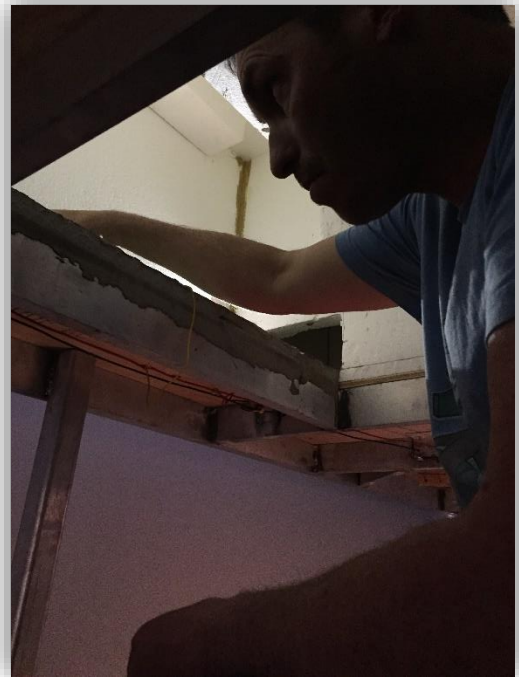
The 2019 Summer season is upon us and we have launched operations of Spiral Tunnel Train replica for our May 1st opening at the Yoho Information Center here in Field, BC, Canada.

Shane Mitchell (our model train guru) and Friends of Yoho board members Sarah Osadetz and Helen Barry worked as a team to get the train circling the track.

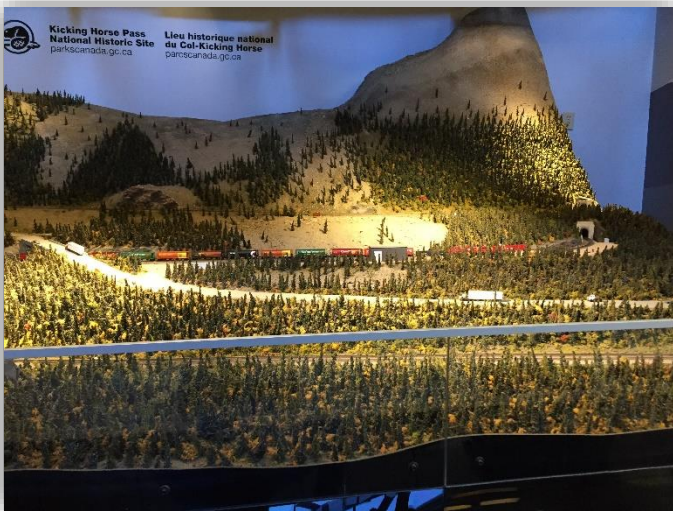
A BIG THANK YOU TO DAN SMITH of Pacific Western Railway Systems.

We have received donated authentic replicas of current train cars for us to run for the summer.

We look forward to seeing you in our center - come on by and enjoy our facility!



An action shot of Shane the Train guy as he is working hard to get the model train back in tip-top shape!



A shot of the spiral tunnel model working once again after receiving some TLC from Shane, Sarah, Helen, and Dan!



Sarah Osadetz working hard on Spiral Tunnel Train replica

Our Membership

Anyone is eligible to become a member of the Friends of Yoho Society! Becoming a member has several benefits including:

- Developing friendships and connecting with a community that is passionate about understanding and appreciating the natural and cultural heritage of Yoho National Park
- Receiving a sense of accomplishment and pride, knowing your membership fee helps in the development of programs and projects that benefit Yoho National Park
- Unlocking a special 10% discount on merchandise in the Friends of Yoho retail store, as well as at additional Friends stores across Canada
- Subscription to newsletter just like this one that will help keep you informed on programs, projects, and events that the Friends are currently working on!

*FOR MORE INFORMATION ON
MEMBERSHIP, VOLUNTEERING OR
DONATING, PLEASE CONTACT:*

PHONE: (250) 343 – 6393
EMAIL: info@friendsofyoho.ca

Volunteering

If you have ideas for new programs or projects that may fit with the Friends organization, please let us know! Additionally, if you know of existing initiatives that the Friends are involved with and you'd like to get more involved, please reach out and we will do our best to use your skillset to its full potential. If you'd like to become deeply involved with the Friends of Yoho organization, consider becoming a Board Member!

More information about the upcoming elections will be coming out in the spring, but in the meantime please connect with us for more information in the near term.

Unique Gifts

The Friends of Yoho National Park operate a gift shop in the Field Visitor Centre. The primary source of funding for all the Friends operation, projects, programs, and publications come directly from the profits generated at this store. The store offers materials to enhance a

visitor stay in Yoho National Park, specializing in natural and cultural books, as well as trail guides, maps, clothing and giftware unique to Yoho National Park.

The store is usually open seven days a week from April to October each

year. Being open seven days each week for 8 months of the year, the store has a number of full time staff positions that pay a competitive salary and offer a rewarding experience in a fast paced retail environment. In addition to looking for future employees, the store is always on the lookout for new product lines and partnerships, so please reach out whether you're interested in employment, products, or partnerships.

Membership Pricing

Individual: \$20, annually

Family: \$40, annually

Lifetime: \$200, one time fee